



OFFICE OF TASMANIAN  
ASSESSMENT, STANDARDS  
& CERTIFICATION

Tasmanian Certificate of Education  
External Assessment 2016

PLACE YOUR CANDIDATE  
LABEL HERE

# HEALTH STUDIES

## (HLT315113)

Pages:	12
Questions:	4

## Section A – Personal Health

Time: 60 minutes

### Candidate Instructions

1. You **MUST** make sure that your responses to the questions in this examination paper will show your achievement in the criteria being assessed.
2. Answer **THREE** questions from this part.
  - You must answer **BOTH** Questions 1 and 2.  
and
  - **EITHER** Question 3 **OR** Question 4
3. Answers must be written in the spaces provided on the examination paper.
4. You should make sure you answer all parts within each question so that the criterion can be assessed.
5. It is recommended that you spend approximately 60 minutes in total answering the questions in this booklet.
6. All written responses must be in English.

On the basis of your performance in this examination, the examiners will provide results on each of the following criteria taken from the course statement:

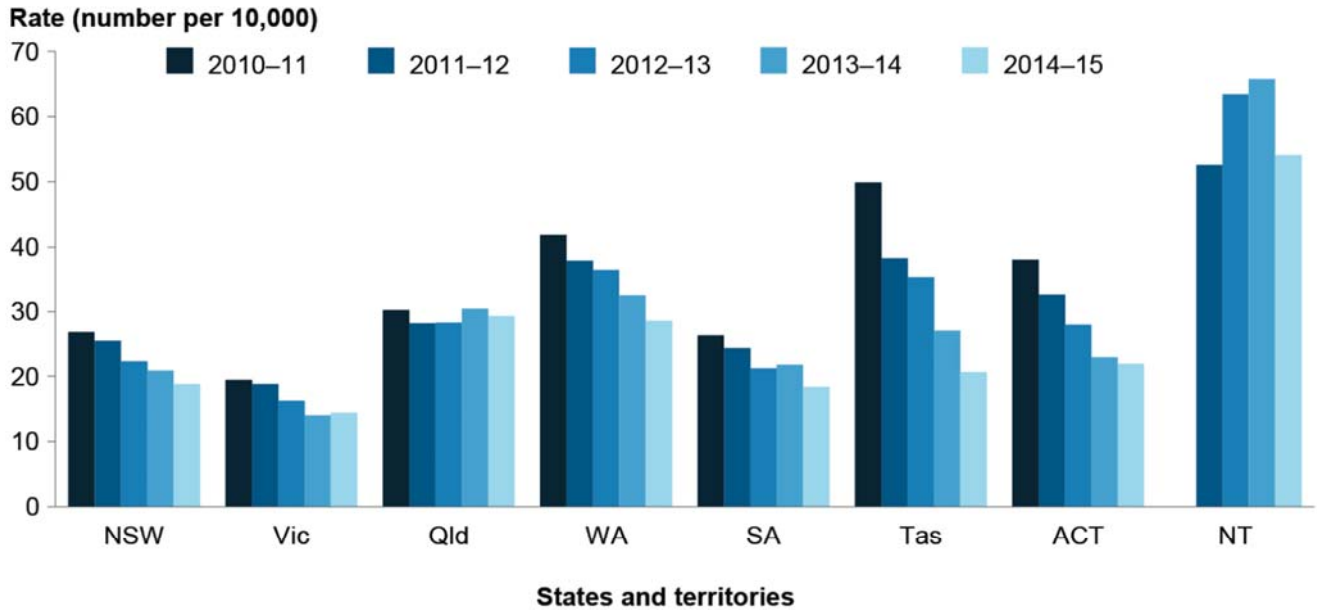
- Criterion 1** Demonstrate an understanding of health and the factors that influence the health of individuals.
- Criterion 3** Identify and profile health issues, and demonstrate understanding of preventative, curative and treatment strategies.
- Criterion 7** Analyse and interpret health related data and information.

**Question 1** (10 minutes)

This question assesses Criterion 7.

Use the information contained in the graph below to answer the following questions.

**Young people aged 10 – 17 under supervision on an average day, states and territories, 2010-11 to 2014-15 (rate)**



*Notes*

- 1. Includes non-standard data for Western Australia for 2010–11 to 2014–15 and for the Northern Territory for 2011–12 to 2014–15 (see 'Technical notes' section). Data for the Northern Territory for 2010–11 are not available.
- 2. Trend data may differ from those previously published due to data revisions.

(a) What does the above graph reflect? (1 mark)

.....

.....

(b) Which state has shown the smallest change between 2010 and 2015? Use supporting data. (2 marks)

.....

.....

.....

.....

.....

**Question 1 (continued)**

- (c) Compare and contrast the rate of young people under supervision in Tasmania with those of the other States/Territories. Use data to support your answer. (3 marks)

.....

.....

.....

.....

.....

.....

.....

.....

.....

.....

- (d) Discuss the overall trend in the rate of young people under supervision between 2010 and 2015. In your answer, highlight any state or territory that does not follow this trend. (4 marks)

.....

.....

.....

.....

.....

.....

.....

.....

.....

.....

.....

.....

.....

.....

.....

.....

.....

.....

.....

.....

.....

.....

<b>Question Total</b>
<b>/10</b>







Answer: EITHER

Question 3

OR

Question 4

---

### Question 3 (30 minutes)

*This question assesses Criterion 3.*

The Tasmanian State Government intends to commit \$2 million to combat negative risk taking among teens.

Choose a current **adolescent health issue** and imagine you are a member of a youth services group that wishes to access part of this funding.

In order to do so, you must:

- Produce a profile of your chosen issue and include data to highlight its importance.
- Identify the key factors influencing its popularity amongst teens and how to move forward in helping those effected or at risk of being effected. (30 marks)

### Question 4 (30 minutes)

*This question assesses Criterion 3.*

Identify and profile a **personal health issue** that you have focused on this year.

- Outline a range of features and evidences that highlight the importance of this issue.
- Discuss **one** strategy that an individual might use to minimise the potential risk associated with this issue.
- Discuss the importance of community services in reducing the harm associated with this issue. (30 marks)





A series of horizontal dotted lines spanning the width of the page, intended for writing.







OFFICE OF TASMANIAN  
ASSESSMENT, STANDARDS  
& CERTIFICATION

*This question paper and any materials associated with this examination (including answer booklets, cover sheets, rough note paper, or information sheets) remain the property of the Office of Tasmanian Assessment, Standards and Certification.*



OFFICE OF TASMANIAN  
ASSESSMENT, STANDARDS  
& CERTIFICATION

Tasmanian Certificate of Education  
External Assessment 2016

PLACE YOUR CANDIDATE  
LABEL HERE

# HEALTH STUDIES

## (HLT315113)

Pages:	12
Questions:	4

## Section B – Health in Australia

Time: 60 minutes

### Candidate Instructions

1. You **MUST** make sure that your responses to the questions in this examination paper will show your achievement in the criteria being assessed.
2. Answer **THREE** questions from this part.
  - You must answer **BOTH** Questions 5 and 6  
and
  - **EITHER** Question 7 **OR** Question 8
3. Answers must be written in the spaces provided on the examination paper.
4. You should make sure you answer all parts within each question so that the criterion can be assessed.
5. It is recommended that you spend approximately 60 minutes in total answering the questions in this booklet.
6. All written responses must be in English.

On the basis of your performance in this examination, the examiners will provide results on each of the following criteria taken from the course statement:

**Criterion 2** Analyse factors influencing the health status of a population.

**Criterion 3** Identify and profile health issues, and demonstrate understanding of preventative, curative and treatment strategies.

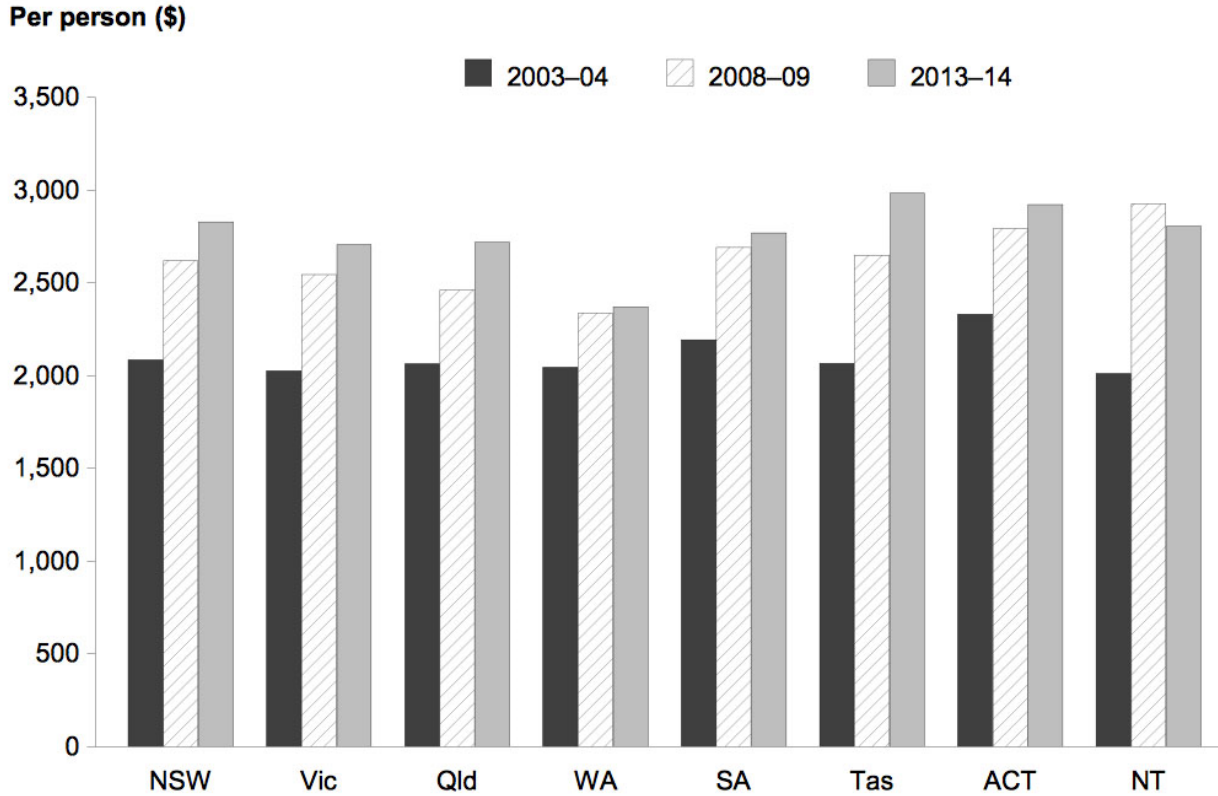
**Criterion 7** Analyse and interpret health related data and information.

**Question 5** (10 minutes)

*This question assesses Criterion 7.*

Use the information contained in the graph below to answer question (a) and (b).

**Australian Government funding of total health expenditure, per person, constant prices, by state and territory, 2003-04 to 2013-14 (\$)**



- (a) (i) Which was the only State/Territory to see a decrease in spending **during the period** reported? Quote supporting data. (2 marks)

.....

.....

.....

.....

- (ii) Which State/Territory had the largest growth in health expenditure per person between 2003 and 2014? Quote supporting data. (2 marks)

.....

.....

.....

.....

**Question 5 continues.**

**Question 5 (continued)**

- (b) Discuss the general trend in Australian Government health spending per person between 2003 and 2014. (2 marks)

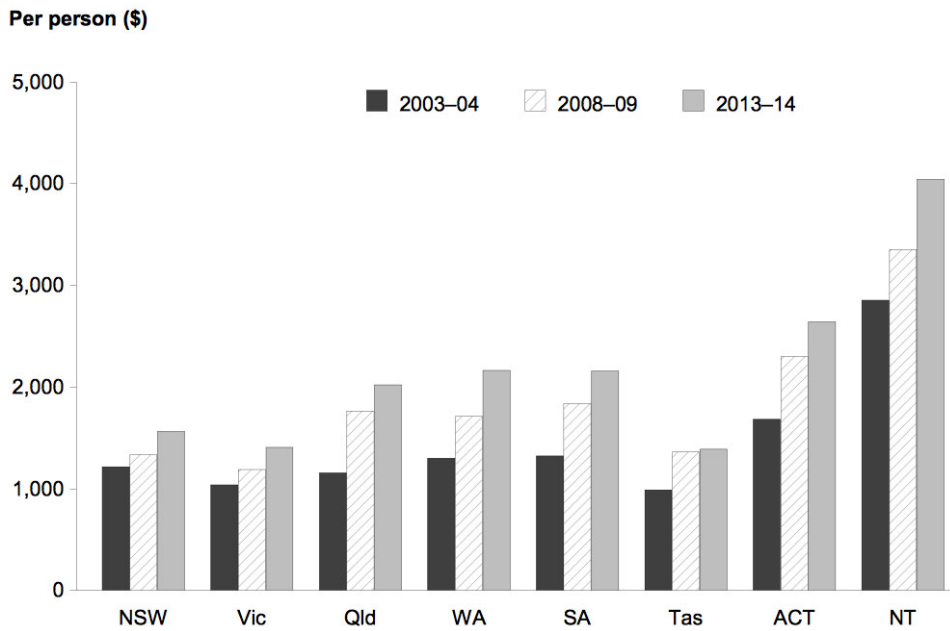
.....

.....

.....

.....

**State and territory government funding of total health expenditure, per person, constant prices, by state and territory, 2003-04 to 2013-14 (\$)**



- (c) Using both graphs provided, discuss the relationship between Australian and State/Territory government funding of health expenditure between 2003 and 2014. Use data to support your answer. (4 marks)

.....

.....

.....

.....

.....

.....

.....

.....

.....

<b>Question Total</b>
<b>/10</b>

**Question 6 (20 minutes)**

*This question assesses Criterion 3.*

Improving the current state of our National Health Priority Areas (NHPAs) will require a combination of interventions from individuals, State and Federal Governments.

- Identify **one** National Health Priority Area, citing current supporting data.
- Outline the importance of promotion in addressing this NHPA.
- Discuss how technology and innovation are assisting in the prevention, cure and treatment of this NHPA.

(20 marks)

.....

.....

.....

.....

.....

.....

.....

.....

.....

.....

.....

.....

.....

.....

.....

.....

.....

.....

.....

.....

.....

.....

.....

**Question 6 continues.**







**Answer: EITHER Question 7**  
**OR Question 8**

---

**Question 7 (30 minutes)**

*This question assesses Criterion 2.*

Those experiencing disadvantage often do so on multiple levels and as a result usually have poorer health outcomes.

- Outline a range of factors that contribute to the disadvantage experienced by **one** group that you have focused on this year.
- Discuss the subsequent impact that these factors have on the ability of members of this group to achieve an optimal state of health.
- Identify and explain the importance of supportive environments made available to this group, citing current supporting data. (30 marks)

**Question 8 (30 minutes)**

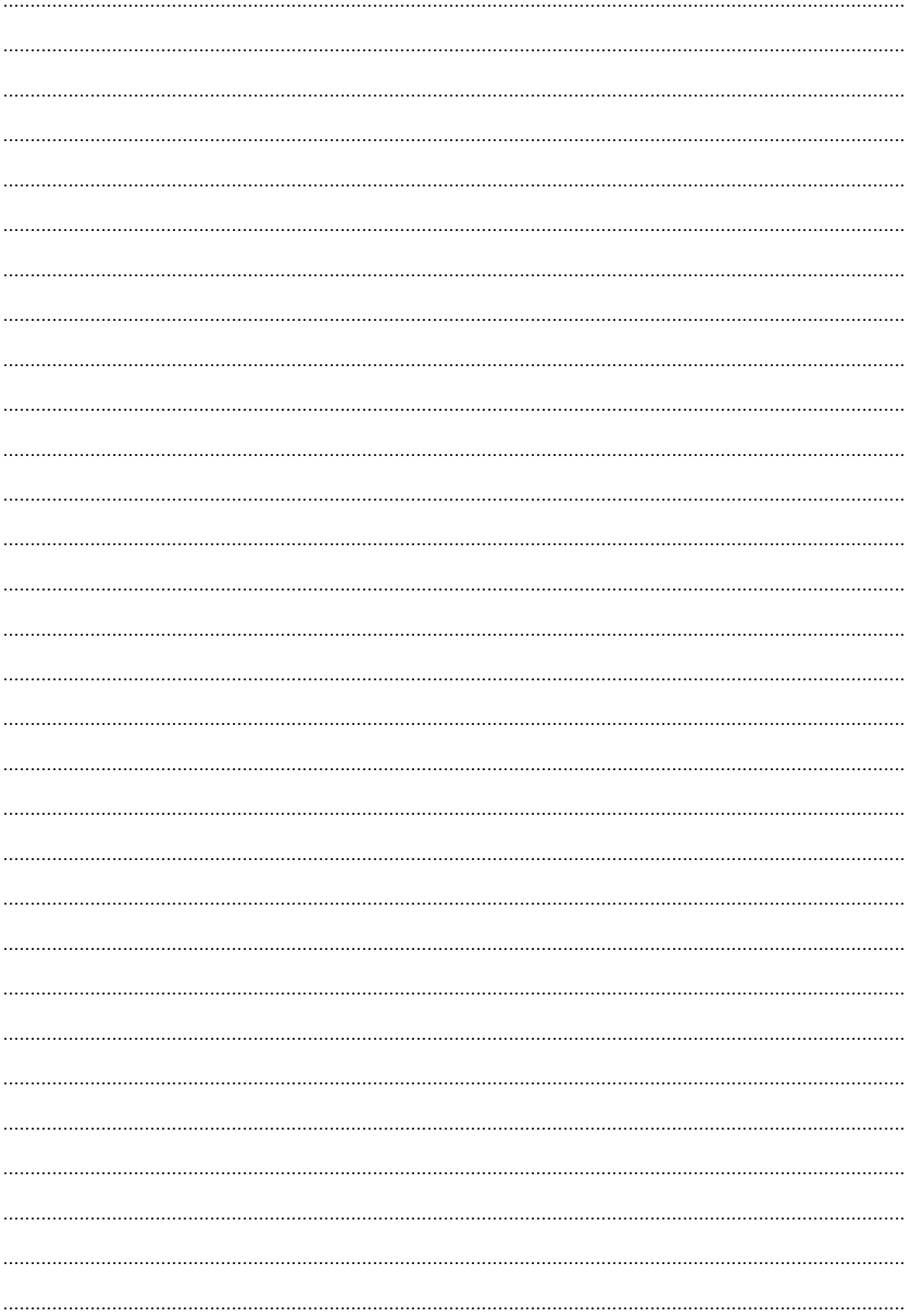
*This question assesses Criterion 2.*

Demonstrate your understanding of Australia's Current Health Care System and how it meets the Social Justice Principles by:

- explaining the components that make up Australia's Current Health Care System
- outlining how alternative and complementary health care services may impact on the health of Australians
- detailing how the current health care system aims to meet the varying needs of the Australian population, in particular those groups experiencing disadvantage. (30 marks)



A series of horizontal dotted lines spanning the width of the page, intended for writing or drawing.



Dotted lines for writing.

<b>Question Total</b>
<b>/30</b>



OFFICE OF TASMANIAN  
ASSESSMENT, STANDARDS  
& CERTIFICATION

*This question paper and any materials associated with this examination (including answer booklets, cover sheets, rough note paper, or information sheets) remain the property of the Office of Tasmanian Assessment, Standards and Certification.*





OFFICE OF TASMANIAN  
ASSESSMENT, STANDARDS  
& CERTIFICATION

Tasmanian Certificate of Education  
External Assessment 2016

PLACE YOUR CANDIDATE  
LABEL HERE

# HEALTH STUDIES

(HLT315113)

Pages:	12
Questions:	4

## Section C – Global Health

Time: 60 minutes

### Candidate Instructions

1. You **MUST** make sure that your responses to the questions in this examination paper will show your achievement in the criteria being assessed.
2. Answer **THREE** questions from this part.
  - You must answer **BOTH** Questions 9 and 10.  
and
  - **EITHER** Question 11 **OR** Question 12
3. Answers must be written in the spaces provided on the examination paper.
4. You should make sure you answer all parts within each question so that the criterion can be assessed.
5. It is recommended that you spend approximately 60 minutes in total answering the questions in this booklet.
6. All written responses must be in English.

On the basis of your performance in this examination, the examiners will provide results on each of the following criteria taken from the course statement:

- Criterion 1** Demonstrate an understanding of health and the factors that influence the health of individuals.
- Criterion 2** Analyse factors influencing the health status of a population.
- Criterion 7** Analyse and interpret health related data and information.

**Question 9** (10 minutes)

*This question assesses Criterion 7.*

Use the information contained in the table below to answer the following questions.

**Percentage of girls who have undergone Female Genital Mutilation (FGM)  
(as reported by their mothers), by mothers' level of education**

Country	No Education (%)	Primary Education (%)	Secondary or higher education (%)	Koranic/non-standard (%)
Mali	76	71	68	0
Eritrea	67	59	40	0
Mauritania	65	49	20	59
Gambia	59	51	43	0
Guinea	58	52	54	0
Djibouti	54	45	33	27
Guinea-Bissau	49	24	9	0
Somalia	47	43	55	43
Ethiopia	41	25	19	0
Côte d'Ivoire	29	8	5	0
Egypt	24	22	11	0
Kenya	22	6	5	0
Chad	21	11	7	0
Sudan	20	62	76	0
Yemen	20	22	15	0
Nigeria	19	14	11	0
Sierra Leone	14	8	9	0
Burkina Faso	15	8	3	0
Senegal	14	7	4	0

(a) What does the information in the table show? (1 mark)

.....  
.....

(b) Which countries show evidence of Koranic/non-standard education levels? Use data to support your answer. (2 marks)

.....  
.....  
.....

**Question 9 continues.**

**Question 9 (continued)**

- (c) What does the data tell us about the relationship between a mother's level of education and rates of FGM? Suggest possible reasons for this relationship by referring to two countries in your answer. (4 marks)

.....

.....

.....

.....

.....

.....

.....

.....

.....

.....

.....

.....

.....

.....

.....

.....

.....

.....

.....

.....

.....

.....

- (d) Of the data reported in the table, highlight a country and its results that are not reflective of the general trend. Use data to support your answer. (3 marks)

.....

.....

.....

.....

.....

.....

.....

.....

.....

.....

.....

.....

.....

.....

.....

.....

.....

.....

.....

.....

.....

.....

<b>Question Total</b>
<b>/10</b>

**Question 10 (20 minutes)**

*This question assesses Criterion 2.*

After peaking at just over \$5 billion in 2012–2013, Commonwealth aid spending is scheduled to fall to \$3.8 billion next financial year, a record low of 0.22% of Australia’s Gross National Income.

- Outline the different forms of foreign aid.
  - Discuss Australia’s role in the provision of foreign aid.
  - Discuss how a reduction in Australia’s aid funding may impact a developing country’s access to Primary Health Care and the possible effects this may have on the health of the community.
- (20 marks)

.....

.....

.....

.....

.....

.....

.....

.....

.....

.....

.....

.....

.....

.....

.....

.....

.....

.....

.....

.....

.....

.....

.....

.....

**Question 10 continues.**





**Answer: EITHER**

**Question 11**

**OR**

**Question 12**

---

**Question 11 (30 minutes)**

*This question assesses Criterion 1.*

Environmental factors are a primary cause of the significant burden of death, disease and disability in developing countries.

Identify and discuss **two** major environmental determinants and how they influence the health of individuals living in a developing country that you have focussed on this year. Provide evidence to support your answer. (30 marks)

**Question 12 (30 minutes)**

*This question assesses Criterion 1.*

In September 2015 world leaders adopted a series of goals known as the Sustainable Development Goals (SDGs).

- Briefly explain the purpose of the SDGs.
- How have they evolved from their predecessors, the Millennium Development Goals (MDGs)?
- Discuss **two** SDGs that you have focussed on this year, the strategies being adopted to achieve them and how they aim to influence the health of individuals living in developing countries. (30 marks)

**Question Number:**

*(In the box write the number of the question you are answering)*

A series of horizontal dotted lines provided for writing the answer.



A series of 25 horizontal dotted lines for writing.



Lined writing area consisting of multiple horizontal dotted lines for text entry.

<b>Question Total</b>
<b>/30</b>



OFFICE OF TASMANIAN  
ASSESSMENT, STANDARDS  
& CERTIFICATION

*This question paper and any materials associated with this examination (including answer booklets, cover sheets, rough note paper, or information sheets) remain the property of the Office of Tasmanian Assessment, Standards and Certification.*